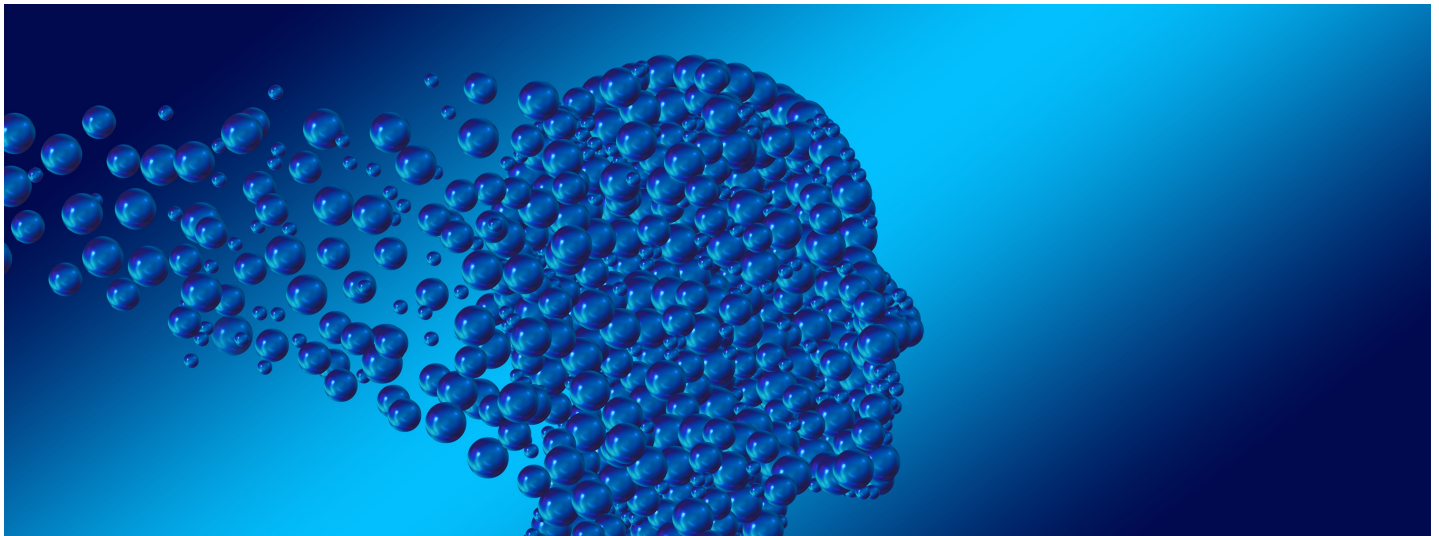




OPEN CHANNEL CULTURE NEWSLETTER

Open the Channels...



Leadership for the Emerging Future

Welcome to OCC's first Newsletter!

Who & What is Open Channel Culture?

I'm Marisa Zalabak, founder of Open Channel Culture. After decades of working in leadership development across a wide range of fields, I recognized common challenges and needs for leaders and organizations in private and public sectors.

None of us live in a vacuum---even though it may feel that way at times--and the gaps I discovered all pointed to a need for continuing development in human skills---even when dealing with technology.

Most often referred to as EQ or Innovation, the skills involved are specific, although many cross boundaries:

- Self-Awareness & Self-Regulation
- Social Awareness & Effective Communication
- Constructive Conflict Management & Peacemaking
- Co-creation & Collaboration
- Imaginative Thinking & Problem-Solving
- Responsible Decision-Making

And...as much as we'd all like to get a "certificate of completion," these skills require continual practice and renewal---for everyone--including me!

I have also discovered the increasing need to expand our understanding of AI Ethics & Sustainability to address the emerging global challenges profoundly affecting our future.

IN THIS ISSUE

WHO & WHAT IS
OPEN CHANNEL
CULTURE?

UPCOMING ISSUES

WHY ADAPTIVE
LEADERSHIP &
REGENERATIVE
PRACTICES?

AI ETHICS EDUCATION
FOR ALL

THRIVING INTO THE
FUTURE



What is Open Channel?

"Open Channel" is based on three concepts: one from nature, one from engineering, and one from social science:



Nature: The world is filled with open channels. Unlike a pipe or a tunnel, a channel has one free surface, open to the atmosphere—like a river or the ocean. The open surface essential to the flow, assists adaptation and agility in continually changing conditions.



Engineering: "Open Channel Flow," is a term used in hydraulic engineering. It refers to studying the dynamic flow of liquids occurring in open channels. Engineers use it to identify and utilize the existing dynamics to optimize a given situation. Like redirecting the reactions to a tsunami or innovating in a crisis.



Social Science: Human "Flow" - a psychological state of intrinsic motivation, named by renowned psychologist, Mihaly Csikszentmihalyi. Optimum flow occurs when high levels of skill and challenge meet---characterized by feelings of great absorption, immersion, engagement, and fulfillment when tackling challenging tasks with high level skills. Similar to "Open Channel Flow"--psychological Flow utilizes existing power dynamics and an open mind.

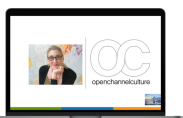
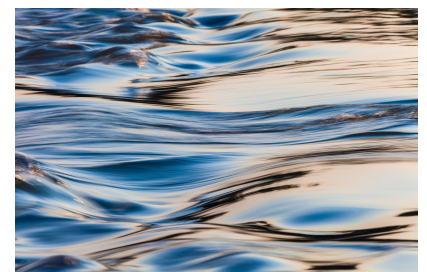
What is an Open Channel Culture?

An Open Channel Culture is a culture that effectively establishes and maintains an environment of productivity and wellbeing for all stakeholders --- while simultaneously taking responsibility for the organization's impacts on the world.



An Open Channel Culture looks and feels like:

- Seeing and hearing all stakeholder (employees, partners, clients, investors, etc). proud to be associated.
- Motivated stakeholders contributing to achieving the goals of the organization.
- Ability and willingness to adapt to change when needed.
- Having a reputation for being trustworthy and equitable.
- Co-creating regenerative hybrid environments for flourishing and well-being.
- Valuing and cultivating the best human skills while learning how to partner responsibly with advanced technologies.



If you'd like to learn more or would like help creating an Open Channel Culture:
Check out our website: www.openchannelculture.com
Or contact me directly at: Mzalabak@openchannelculture.com

***Next Newsletter:** Why Adaptive Leadership & Regenerative Business?